

Wendy Delano  
Director

Rod Saavedra  
Assistant Director

# **SALEM CIVIC CENTER**

## **FACILITY INFORMATION**

**REVISED August 2022**

1001 Roanoke Blvd. – Salem, VA 24153 ♦ PH: (540) 375-3004

[www.SalemCivicCenter.com](http://www.SalemCivicCenter.com)

---

# TABLE OF CONTENTS

<b>1.0 FACILITY SPECIFICATIONS .....</b>	<b>3</b>
1.1 CAPACITY .....	3
1.2 ELECTRICAL .....	3
1.3 FLOOR SIZE & ACCESS .....	3
1.4 FORKLIFTS .....	3
1.5 HEADSETS .....	3
1.6 HOUSE LIGHTING .....	3
1.7 LOADING AREA .....	3
1.8 MIX LOCATION .....	3
1.9 PARKING .....	3
1.10 RIGGING .....	4
1.11 SCOREBOARD .....	4
1.12 SOUND SYSTEM .....	4
1.13 SPOTLIGHTS.....	4
1.14 ELEVATIONS.....	4
1.15 STAGING, MIX & BARRICADE.....	4
1.16 SUPPORT AREAS .....	4
1.17 INTERNET/TELEPHONES.....	4
1.18 TRUCK STAGING .....	4
1.19 WEIGHT RESTRICTIONS.....	4
<b>2.0 GUEST SERVICES .....</b>	<b>4</b>
2.1 CONCESSIONS .....	4
2.2 CONCOURSE LEVEL OFFICES .....	4
2.3 NOVELTIES.....	5
2.4 PARKING .....	5
2.5 RESTROOMS.....	5
2.6 ATM .....	5
<b>3.0 GENERAL INFORMATION.....</b>	<b>5</b>
3.1 COLISEUM HOURS .....	5
3.2 ELEVATORS.....	5
3.3 INDOOR PYROTECHNICS .....	5
3.4 SECURITY.....	5
<b>4.0 FACILITY CHARTS &amp; PLANS.....</b>	<b>6</b>
4.1 SEATING CONFIGURATIONS .....	6
4.2 SEATING CHARTS .....	7
4.3 RIGGING LAYOUTS .....	8
4.4 BACKSTAGE .....	<b>ERROR! BOOKMARK NOT DEFINED.</b>
4.5 DRESSING ROOM LAYOUT .....	<b>ERROR! BOOKMARK NOT DEFINED.</b>

# 1.0 FACILITY SPECIFICATIONS

Outside East End: 3 or 4 wire  
50-amp Range Plugs  
Cold water hook up outside

## 1.1 CAPACITY

---

The arena is a rectangle with four primary seating sections: upper fixed, lower fixed, lower risers and floor.

Concert 6,516  
Basketball 4,356  
Rodeo 3,996

See **Seating Configurations** for additional information.

## 1.2 ELECTRICAL

---

### Show Power East

**Located stage right,**

45' from downstage center

(1) 400 Amp, 3 phase

(1) 200 Amp, 3 phase

**Located stage left upstage**

30' from upstage center

(1) 600 Amp, 3 phase hard wired

**Located stage left,**

45' from upstage center

(1) 200 Amp, 3 phase

### Show Power West

**Located at rear of house left,**

150' from upstage center

(1) 100 Amp, 3 phase hard wire fed from 200amp on east end

(1) 50 Amp, 3 phase plug

**Located at rear of house right,**

150' from upstage center

(1) 100 Amp, 3 phase hard wire fed from 200amp

(1) 50 Amp, 3 phase plug

### Bus Power

(7) 50 Amp, 3 phase)

All service voltage is 120/208

### Catering Electrical:

## 1.8 MIX LOCATION

---

The house mix location is house center at upper booth area. 170' from down stage edge

## 1.3 FLOOR SIZE & ACCESS

---

Wall to wall 96' X 221'

Risers extended 68' X 221'

## 1.4 FORKLIFTS

---

(2) Nissan forklifts with 5,000 lbs basic load capacity and 14' lift. One set of five-foot fork extensions.

(1) Case forklift with 6,000 lbs basic load capacity.

## 1.5 HEADSETS

---

No Clear COM system.

## 1.6 HOUSE LIGHTING

---

Florescent tubes combined with a dimmable LED system.

## 1.7 LOADING AREA

---

Located at the East end of building (service area) with 2 Exterior roll-up doors.

Exterior roll-up door measures 21'4" X 24'w. Interior roll-up door measures 15'5" X 12'w. Distance from exterior door to interior door is 80'. Distance from exterior door to rear of stage is 90'.

Can pull trucks directly to interior door.

The interior staging area (backstage) is approximately 105' X 95'.

## 1.9 PARKING

---

Service area has space and power for approximately Five buses and/or trucks in annex. Service area is

secured and lighted. Adjacent parking lot provides ample additional parking.

## **1.10 RIGGING**

---

### **End Stage**

Open steel at 46' above arena floor  
Beams on 30' centers  
Beams run parallel with upstage/downstage edge

## **1.11 SCOREBOARD**

---

Wall hung board with florescent lights.

## **1.12 SOUND SYSTEM**

---

1 - 210 – Altec Double 15" Base span, 2 multi cell 1505 Altec with 2-exen 288 drivers, 4 A7 Altec side fill 15" with horn, 2 - 203 Altec horns with 288 drivers, 4 - 311-90 Altec horns with 288 drivers, 1 marantz FM tuner, 1 Sony cd player, 2 - 367 Shure mixers, 1 symetrix eq processor, 1 – 600, 5 – 200, 1 – 210 and 2 4200 crown amp main cluster amp

## **1.13 SPOTLIGHTS**

---

(4) 2k Lycian 1290 XLT's

## **1.14 ELEVATIONS**

---

16' – Concourse  
33' – Last row  
46' – Open steel

## **1.15 STAGING, MIX & BARRICADE**

---

All material is Sico

### **Stage**

80' x 40' (4' x 8' sections)  
Adjustable from 4' to 7' high  
Four lighted stair units  
ADA lift  
Weight limit is 125 lbs per square foot live load

### **Mix Platform**

Rev 01/2020

12 - 4' x 8' sections adjustable from 16" to 24" high

### **Barricade**

50 sections of bike barricade, 8'4" long x 3'7" high  
72' of Blow-Through barricade

## **1.16 SUPPORT AREAS**

---

### **Dressing Room Area**

Production office (2) 14'w x 9'd  
Promoter office (1) 10'w x 18'd  
Hospitality room (1) 83'w x 22'd  
Dressing room A with shower 13'w x 13'd  
Dressing room B with shower 17'w x 16'd  
Dressing room C with shower 21'w x 10'd  
Dressing room D no shower 19'w x 10'd  
Dressing room E no shower 28'w x 13'd  
Dressing room F with shower 16'w x 17'd  
Dressing room G with shower 16'w x 20'd

## **1.17 INTERNET/TELEPHONES**

---

Phone lines and internet (hard-wired and wireless) are available backstage, arena floor, lobby, and concourse

## **1.18 TRUCK STAGING**

---

Truck staging area is approximately 180' x 90'

## **1.19 WEIGHT RESTRICTIONS**

---

Main floor restrictions to 500 PSF

## **2.0 GUEST SERVICES**

### **2.1 CONCESSIONS**

---

5 permanent food and beverage stands  
Multiple portable locations

### **2.2 CONCOURSE LEVEL OFFICES**

---

#### **Guest Services Information Desk**

Located in main lobby. Staffed during events offering Lost & Found, Lost Children services and Arena information.

### **First Aid**

Located at back of floor. Staffed with first aid personnel and supplies during events

## **ALL FACILITIES ARE ACCESSIBLE TO THE PHYSICALLY CHALLENGED**

### **2.3 NOVELTIES**

---

Novelty locations are available in lobby.

### **2.4 PARKING**

---

2,578 on-site parking spaces  
\$5.00 per car parking fee VIP

### **2.5 RESTROOMS**

---

Concourse: 4 Women's / 4 Men's  
Lobby: 1 Women's / 1 Men's

### **2.6 ATM**

---

(1) ATM located at outside front doors

## **3.0 GENERAL INFORMATION**

### **3.1 COLISEUM HOURS**

---

The Salem Civic Center and its facilities will be scheduled for your use as specified in your Facilities License Agreement. Changes may incur additional charges.

**Ticketed Events** (i.e., Concerts, Spectator Events)  
The doors of the Salem Civic Center will normally open for the public one hour prior to the event start time designated on the tickets.

### **Trade/Consumer Shows**

The doors of the Salem Civic Center will open for the

Rev 01/2020

public at the time designated as the show hours.

### **3.2 ELEVATORS**

---

#### **Public Elevators**

One public elevator; the use of these elevators is restricted to guests with disabilities and others who require assistance.

Lobby odd side of facility

### **3.3 INDOOR PYROTECHNICS**

---

The procedure to obtain approval to use pyrotechnics at the Salem Civic Center is as follows:

- 1) Contact the Salem Civic Center **(540) 375-3004** at least 45 working days in advance of the date that you wish to use pyrotechnics. An application and memo explaining the full procedure will be sent to you.
- 2) Meet all the requirements of **NFPA 1126, 1992 EDITION.**
- 3) Use only properly licensed pyrotechnicians and/or companies.
- 4) Obtain approval from the State of Virginia as well as City of Salem Fire Department approval. You must file a plan of what will be used and where and provide a local demonstration of all effects that will be used. Additional fire watch personnel, paid for by the event, will be assigned by SFD.

### **3.4 SECURITY**

---

Due to the diverse nature of the events and the size of the Salem Civic Center, we maintain our own staff responsible for basic building security and the safeguard of Salem Civic Center property. The Event Manager will be your contact for any additional security needs you may have.

24-hour recorded security cameras are posted in various areas.

**The Salem Civic Center is not responsible for any lost or stolen articles.**

## 4.0 FACILITY CHARTS & PLANS

### 4.1 SEATING CONFIGURATIONS

---

#### CONCERT:

##### End Stage - 240 degrees

Fixed	3,996
Risers	720
Floor Risers	432
Floor	1,350
Disabled	<u>18</u>
<b>Total</b>	<b>6,516</b>

##### - 220 degrees

Upper Fixed	3,750
Risers	720
Floor Risers	432
Floor	1,350
Disabled	<u>18</u>
<b>Total</b>	<b>6,270</b>

##### - 180 degrees

Upper Fixed	3,158
Risers	630
Floor Risers	432
Floor	1,350
Disabled	<u>18</u>
<b>Total</b>	<b>5,588</b>

##### Theater Set

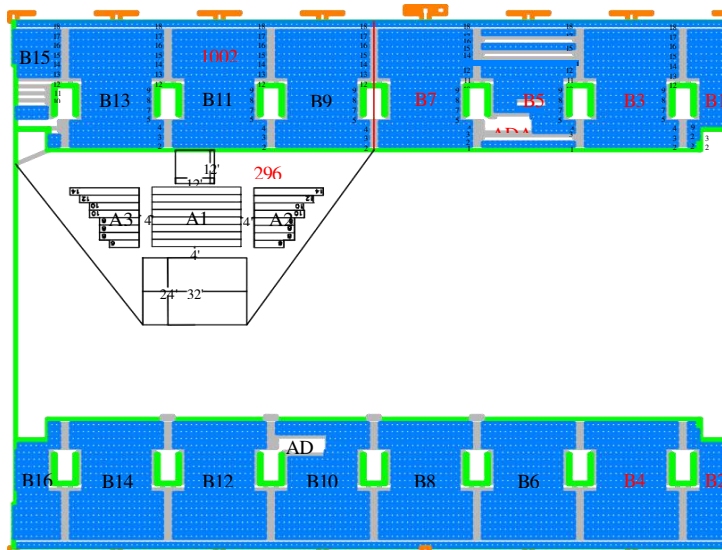
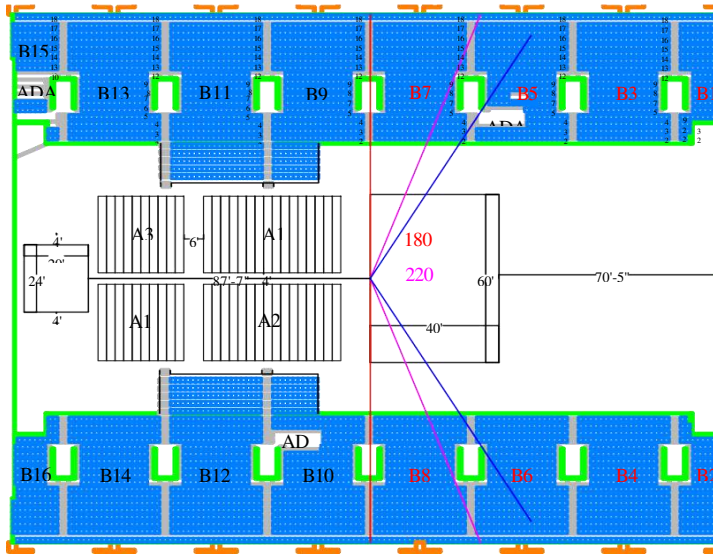
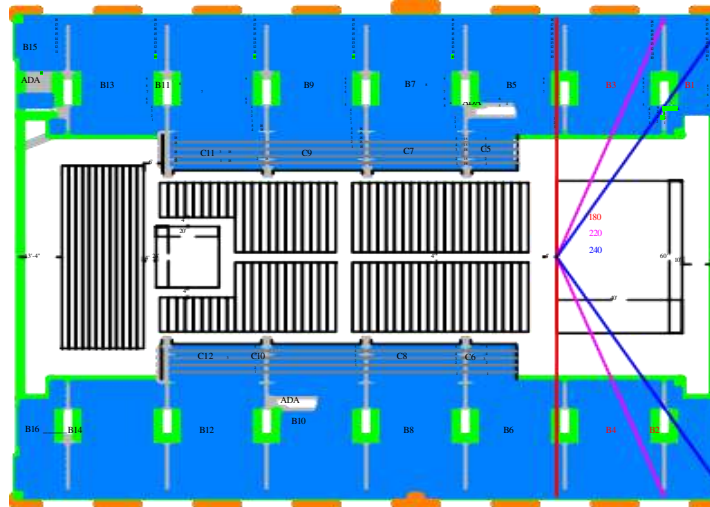
Fixed	1,010
Risers	270
Floor	296
Disabled	<u>6</u>
<b>Total</b>	<b>1,582</b>

##### Half-House: "End Stage"

Fixed	1,994
Risers	270
Floor	1,380
Disabled	<u>6</u>
<b>Total</b>	<b>3,650</b>

## 4.2 SEATING CHARTS

### SEATING CHARTS



### 4.3 RIGGING LAYOUTS

