



CADENCE BANK

Arena & Conference Center

TECHNICAL INFORMATION

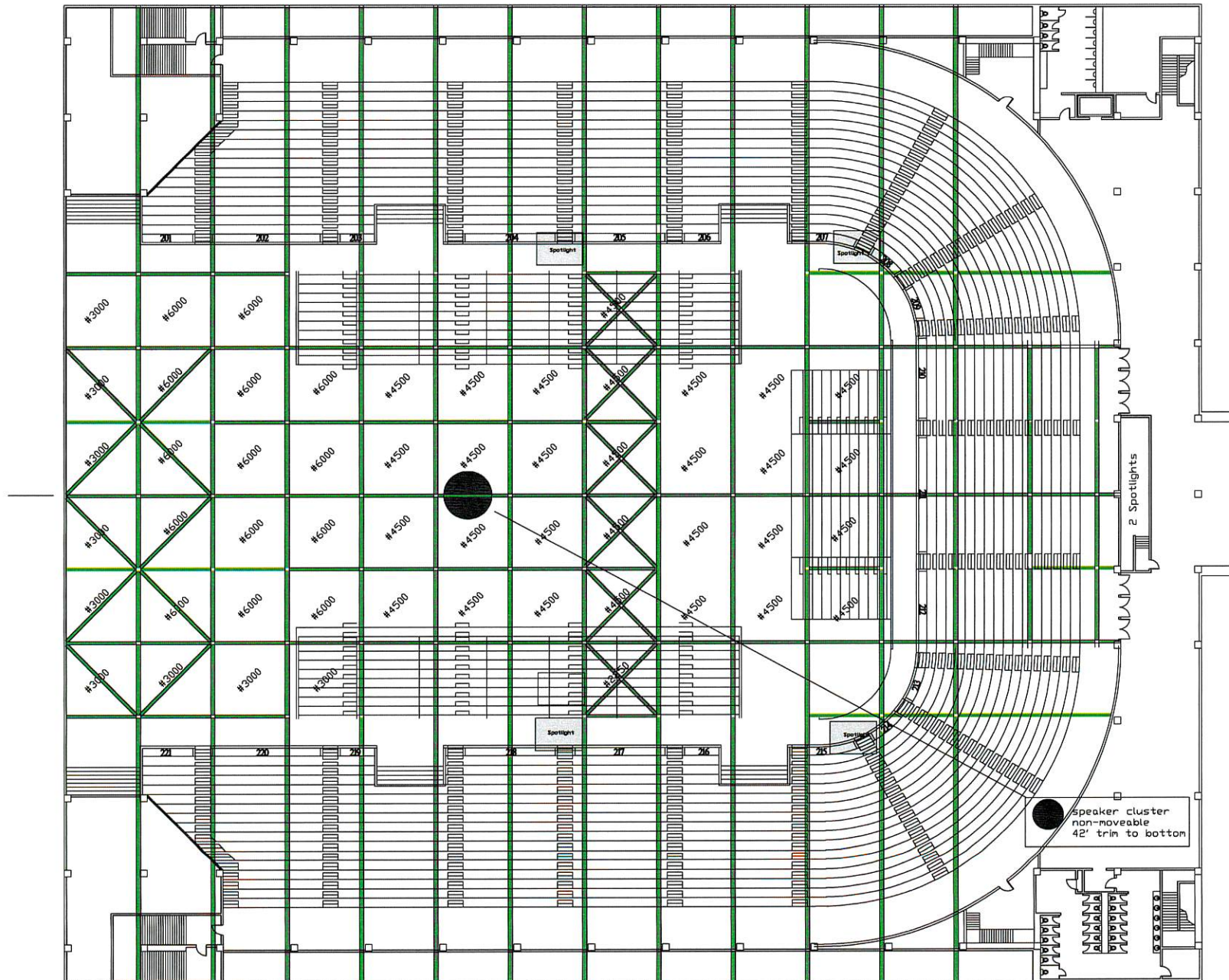
ELECTRICAL:	<u>Stage Right</u>	<u>Stage Left</u>
	200 Amp (2)	200 Amp (2)
	400 Amp	600 Amp
	600 Amp	800 Amp
	Bus/RV Hookups: 30 & 50 amps	
	Distance to Stage: 30' full house / 125' half house	
STAGING:	Sico Roll & Set 4' X 8' sections Adjustable from 4' to 6' Largest stage 60'x40'	
FORKLIFTS:	2 5000 lb with 6' forks 1 2000 lb	
RIGGING: (rigging plot attached)	52' trim height to low steel 22' X 22' bays between beams Open grid Fixed speaker cluster at center house / 42' trim height	
DRESSING ROOMS:	2 Star Rooms 4 Locker Rooms (1 typically used as production office) 2 Theatrical Rooms with make-up mirrors 2 small production offices Furniture available	
LOAD IN:	No dock - ramps and/or fork only 18' X 30' load in door adjacent to stage area Trucks can drive into the arena for half house shows	
PRODUCTION CONTACT:	Matt Lentell: 570-490-6370: mlentell@bcsarena.com:	

Mail:
P.O. Box 7288,
Tupelo, MS 38802

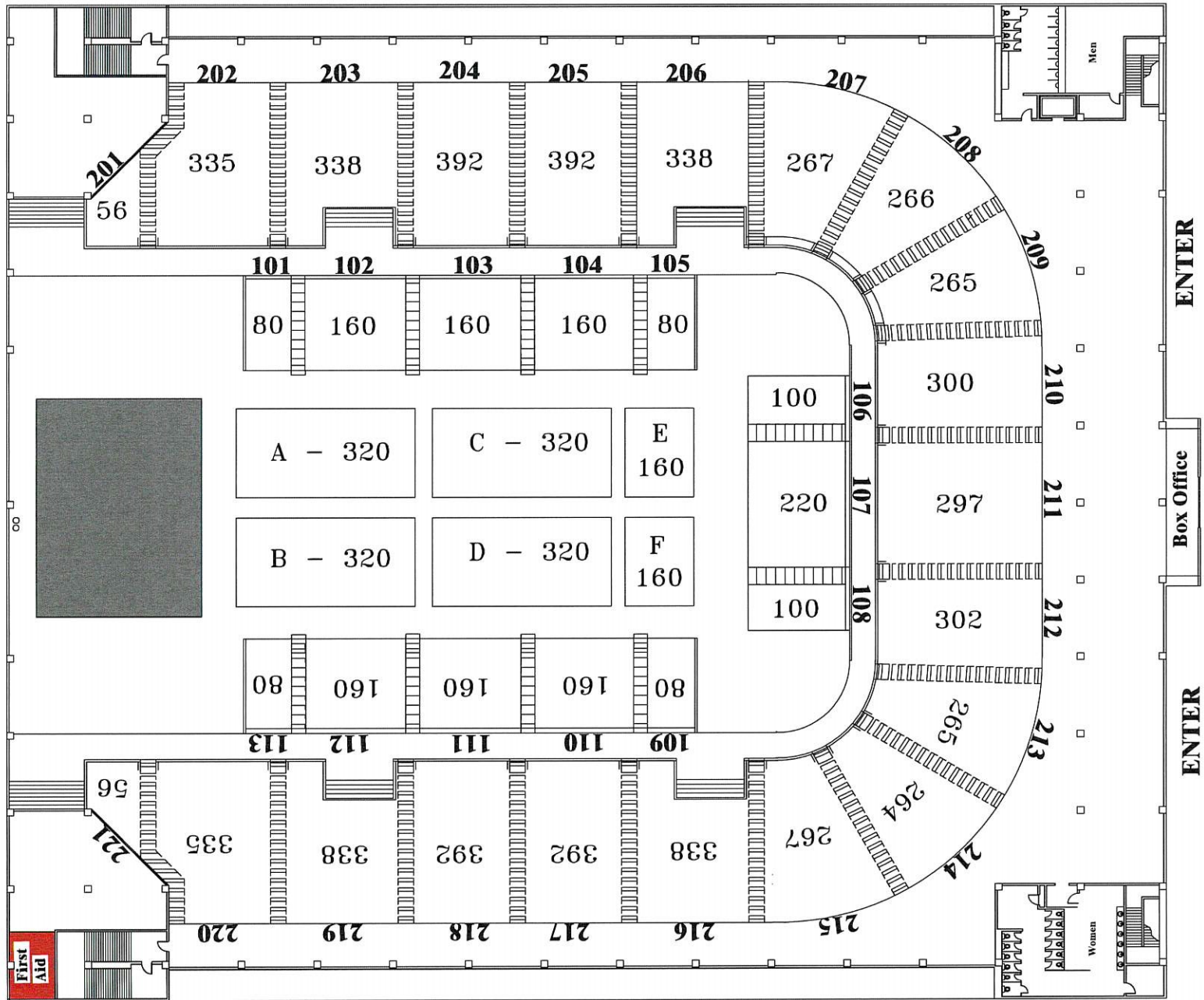
Contact:
(662)841-6573 / Fax (662)841-6413 www.bcsarena.com

Shipping:
375 E Main St,
Tupelo, MS 38802

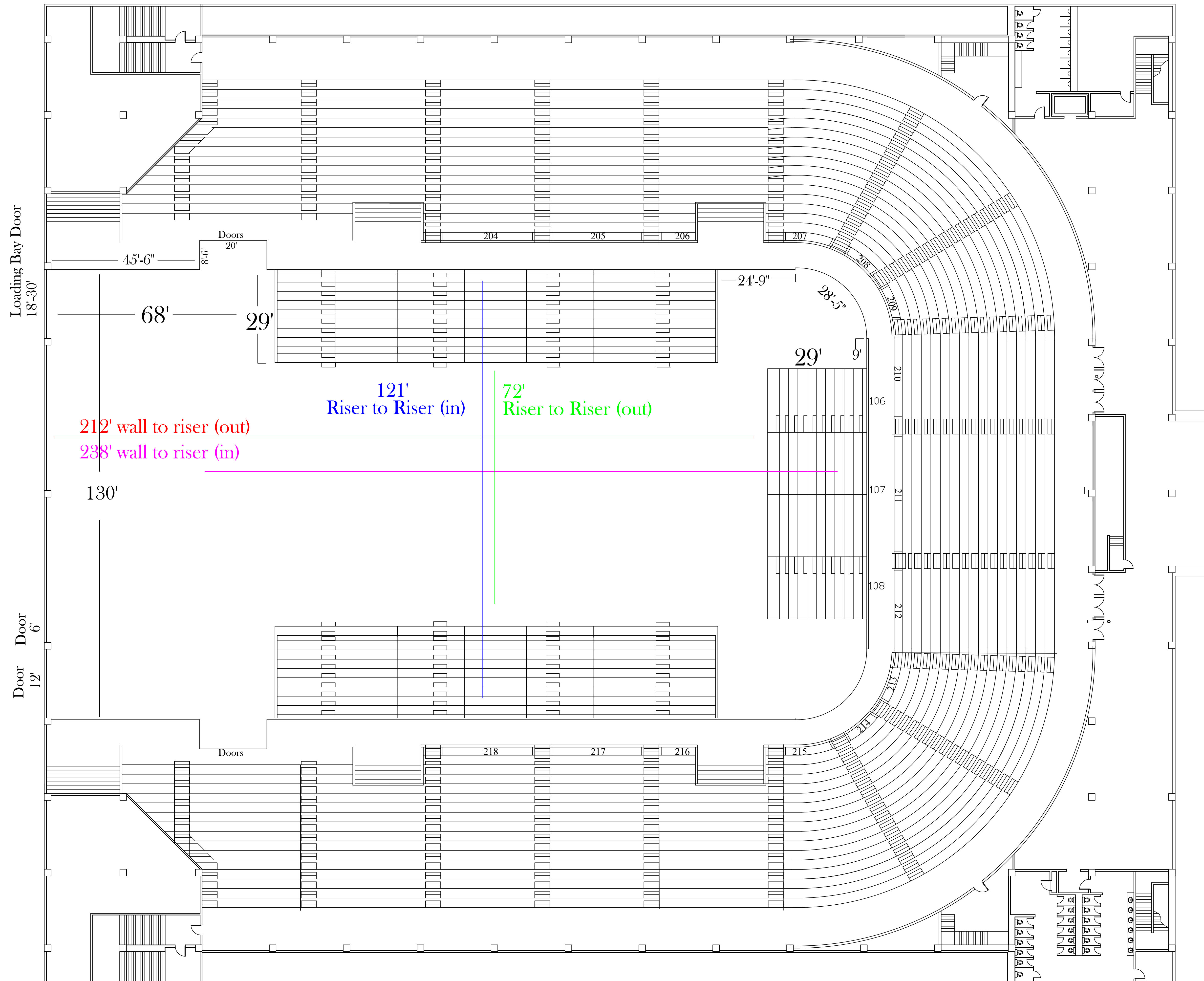
Rigging/Structural/Catwalk



Full house seating map:



Arena Dimensions:

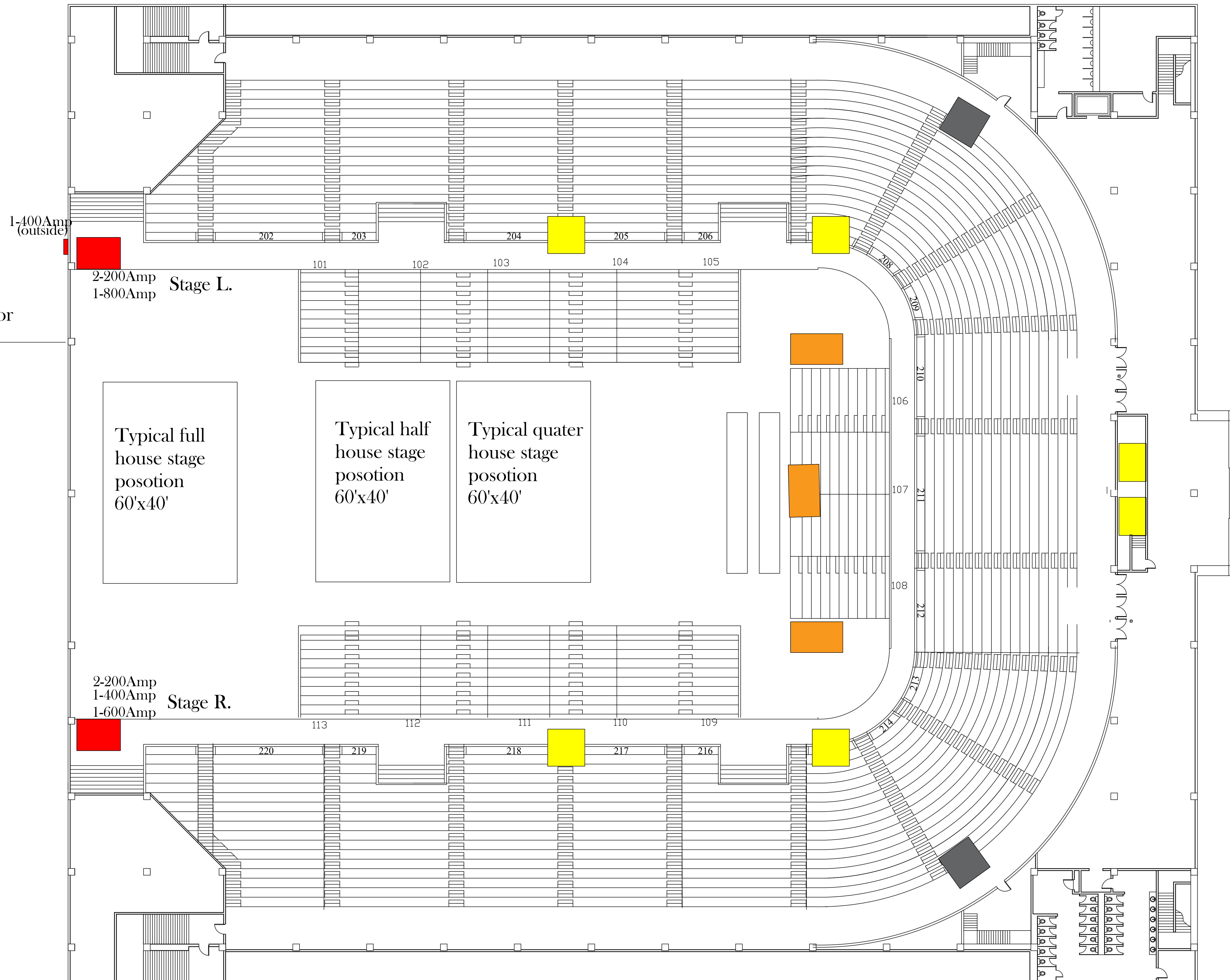


Facility Specs:

North

Load-in door

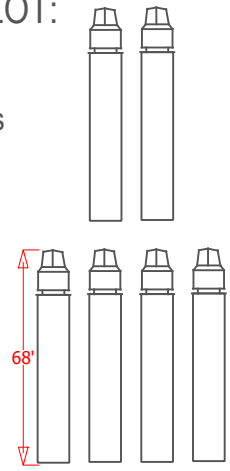
- Power locations
- House spotlights
- Production
- Dressing rooms
- Disney Spots
- FOH locations



NORTH EAST PARKING LOT:

Artist Secured Parking
20 dedicated 50amp hook ups

226' X 257'



FULL FACILITY UPDATED JULY 2022:

EAST PARKING LOT:

226' X 670'

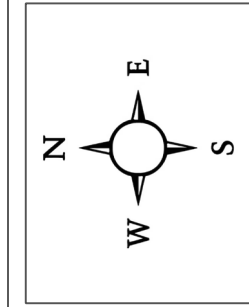
Secondary Loading Bay Security Gate:

26'

Main Loading Bay Security Gate:

26'

NORTH PARKING LOT:



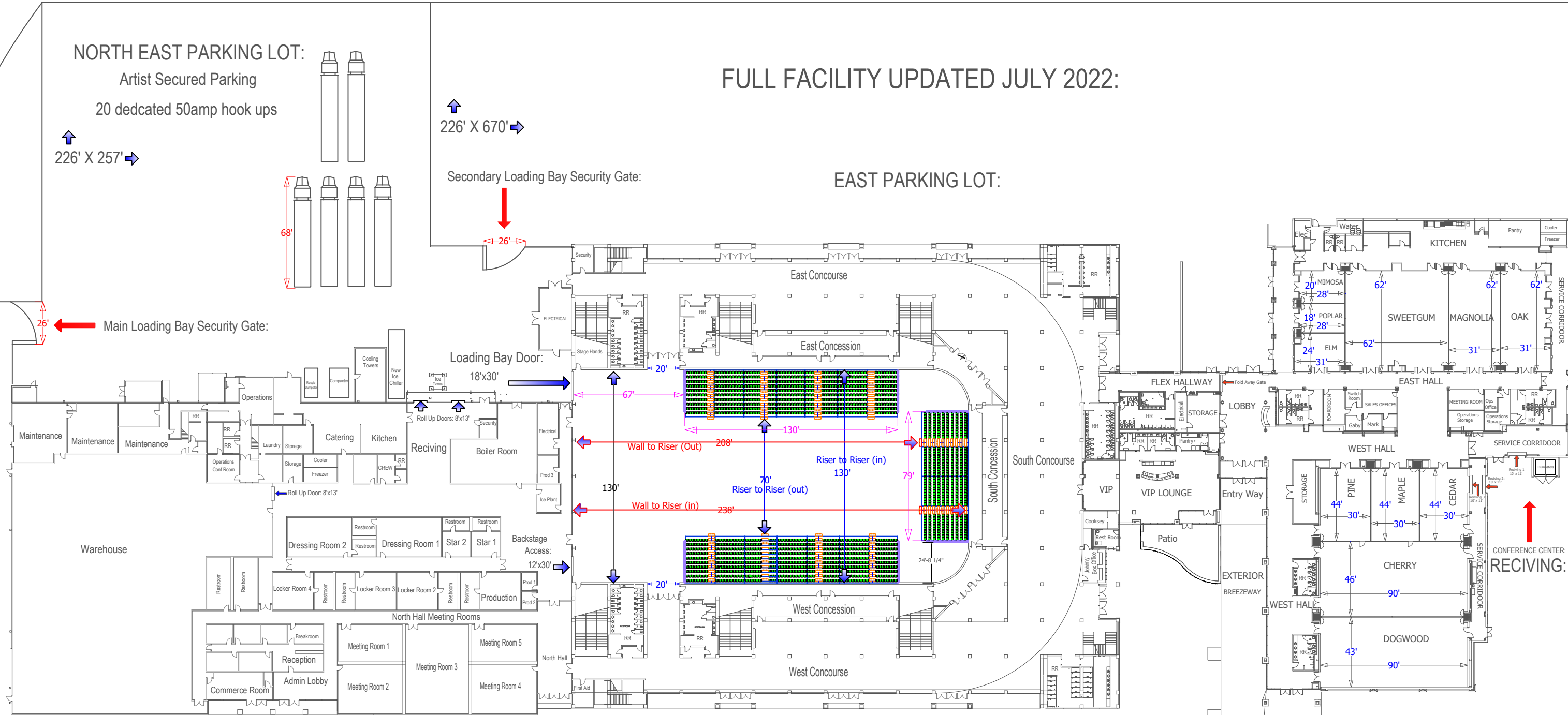
ADMINISTRATIVE BUILDING:

310' X 1075'

MAIN ARENA:

WEST PARKING LOT:

CONFERENCE CENTER:



CONFERENCE CENTER: RECVING: